

SWG RRD
SWG



“Integrated approach to the economic development of the cross-border regions of the Western Balkans-”

Irena Dzimrevska, SWG Head Office/ Secretariat



Background



Vision

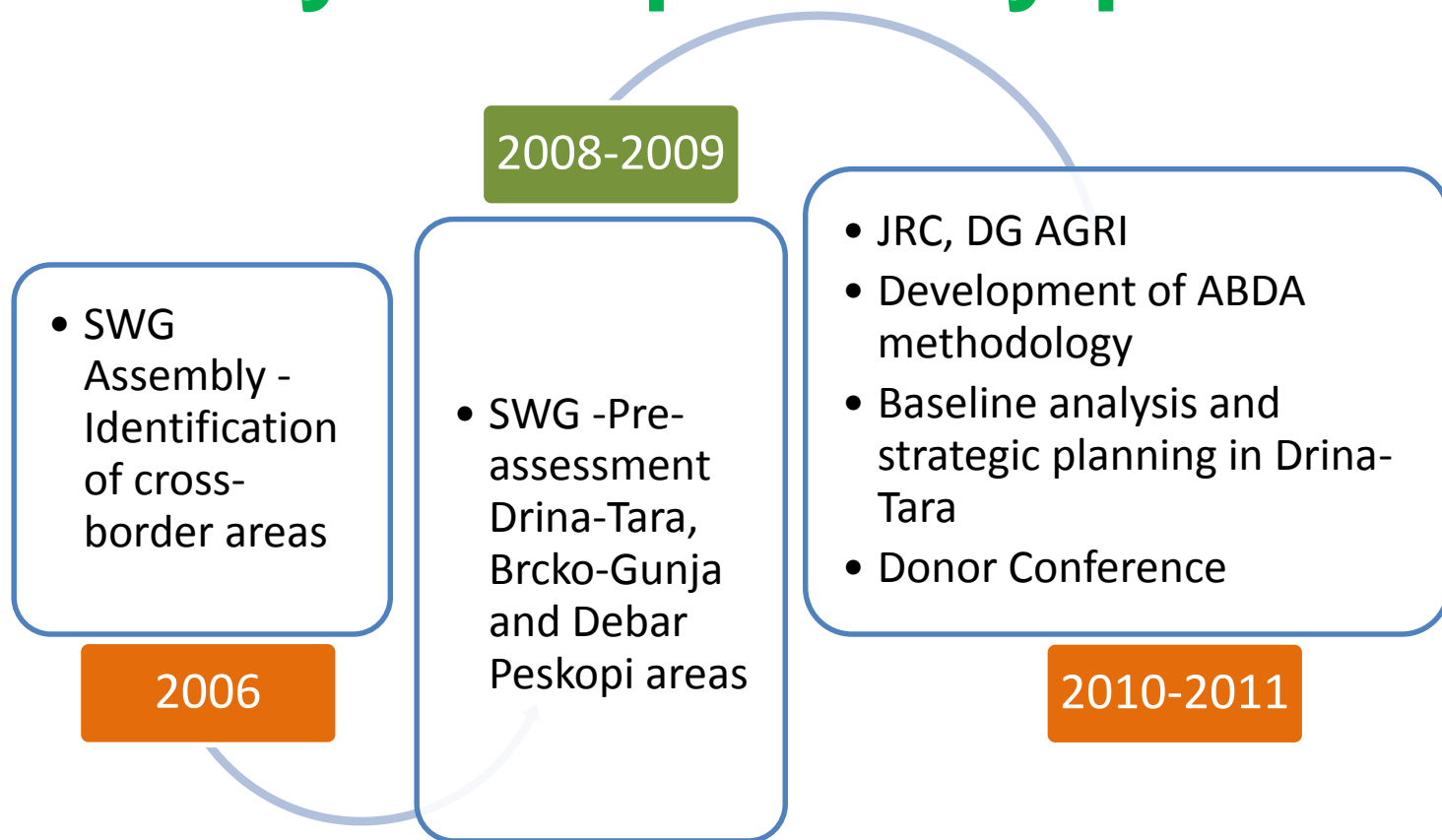
Innovative and sustainable agriculture and rural development through cohesive regional co-operation for improvement of rural livelihoods in the SEE countries

Mission

To increase horizontal collaboration among SEE countries.
Coordinating regional initiatives.
Support the process of social and economic development of rural areas in South Eastern Europe

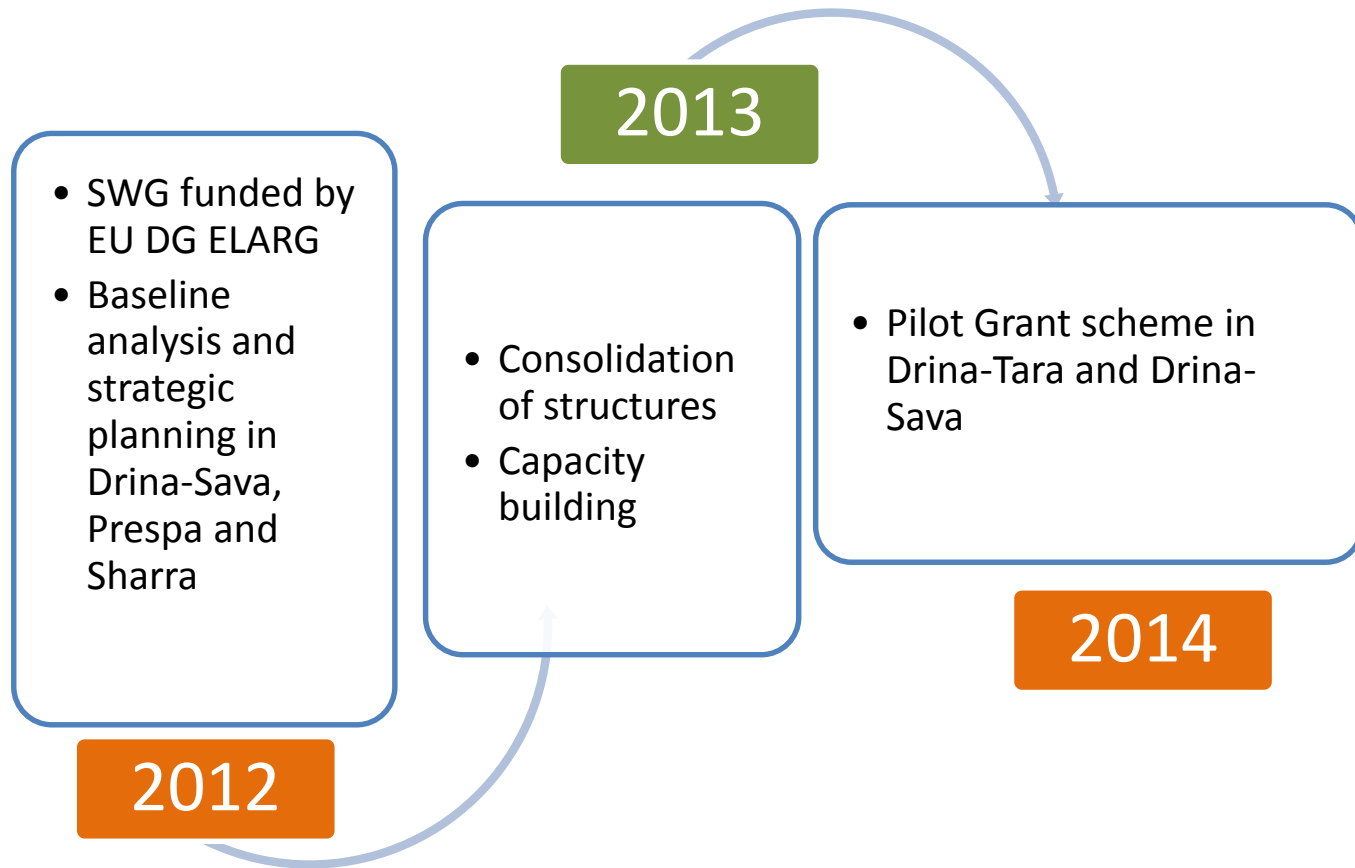
SWG
RRD

History – Preparatory phase



History – capacity building phase

SWG
RD
MS





ABDA cross-border regions

“Drina – Tara”

(Bosnia and Herzegovina, Serbia and Montenegro)

“Drina – Sava”

(Bosnia and Herzegovina, Croatia and Serbia)

“Sharra”

(Albania, Macedonia and Kosovo*)

“Prespa”

(Albania and Macedonia)

SWG CRRD



SHARA
CROSS-BORDER STACKHOLDER GROUP



PRESPA
CROSS-BORDER STACKHOLDER GROUP



DRINA-SAVA
CROSS-BORDER STACKHOLDER GROUP



DRINA-TARA
CROSS-BORDER STACKHOLDER GROUP

Current phase

- Facilitation of the work of SHG
- Managing activities in the regions (e.g. promotional activities such as people-to-people actions)
- Publicity related to existing Calls for proposals
- Facilitation of the process of preparation of project proposals for different Calls with special emphasis on CBC Calls
- Continuation of activities on creation of partnerships and cooperation within short-value chains
- Assessment of situation and development potentials of “Pcinja”, “Neretva” and “Prokletije”

2015-2017

ABDA Process

Baseline Analysis

Strategic Planning

Programming

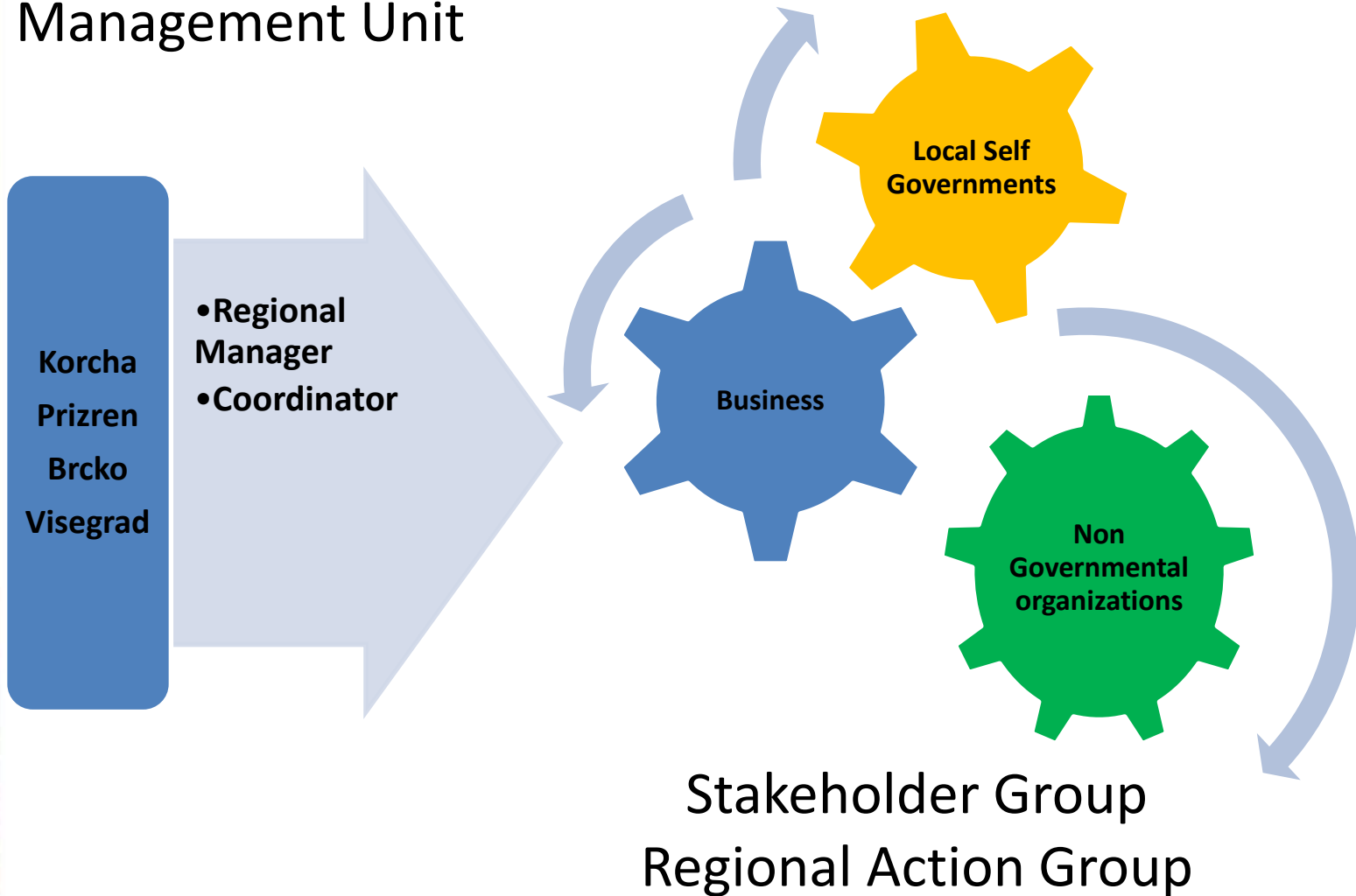
Implementation

Based on
defined
development
priorities

Without special
budget allocations
for ABDA
Programmes

Structures in the regions

Secretariat
Management Unit

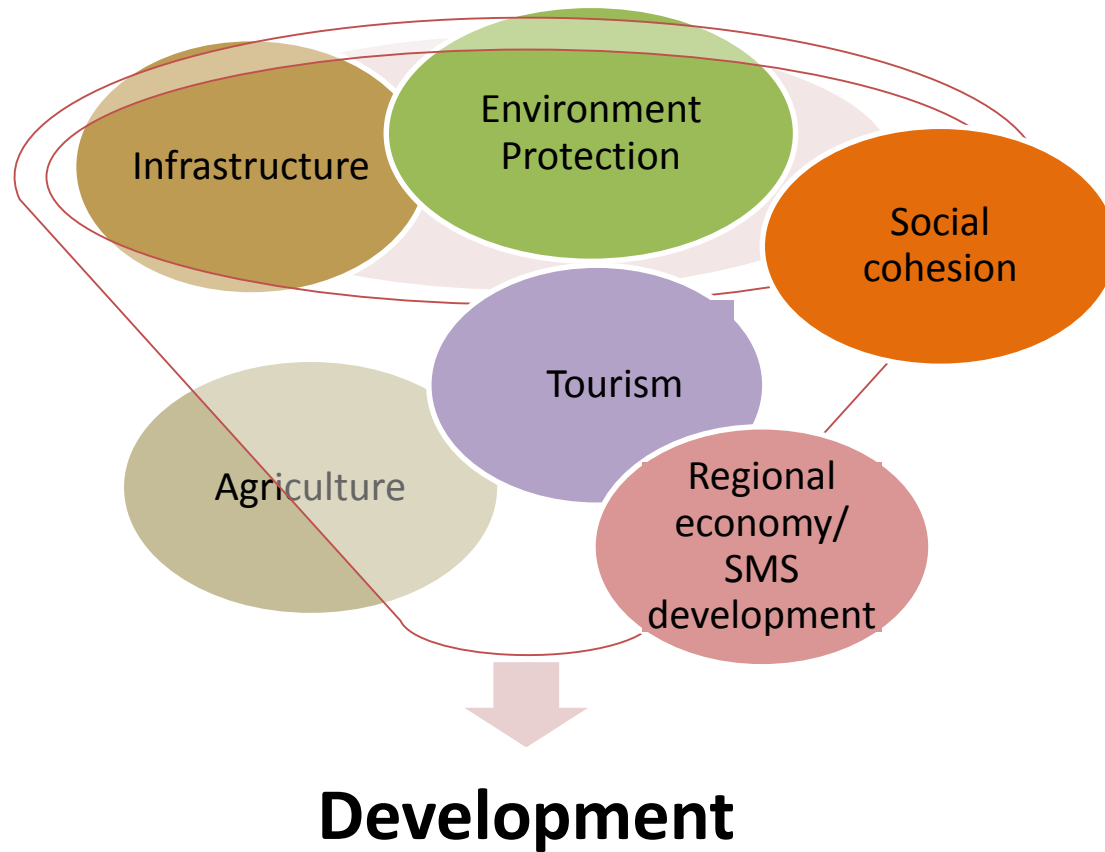


ABDA – LEADER-CLLD

- Focuses on specific cross-border area
- Is regionally led by Stakeholder Group i.e. Regional Action Group
- Include integrated multi-sectoral approach based on Strategies for economic development of the respective region and respective Programme
- Consider needs of the region and development potential including networking, cross-border cooperation principles



Development priorities

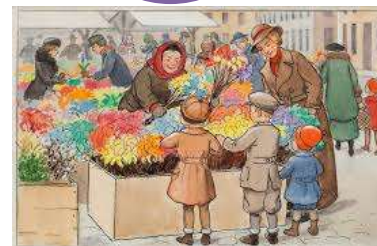
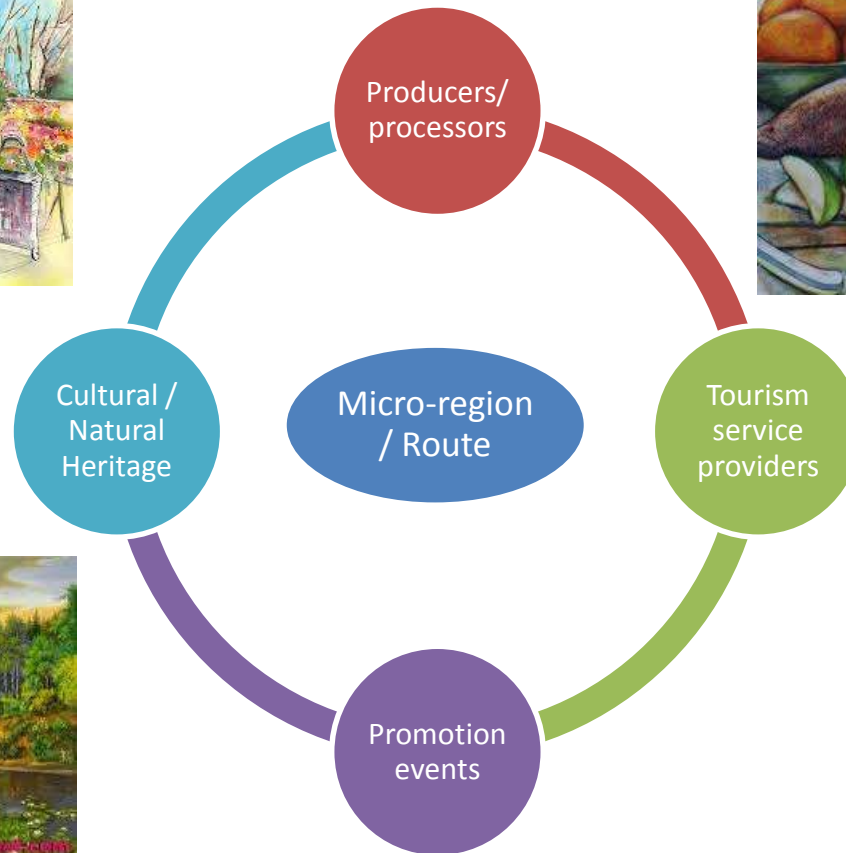


SWGD
RDRD



Integrated economic development

Short value chains



SWGD
SRD

Example

Implementation of integrated economic development approach in the “Drina - Tara” and “Drina - Sava” cross-border regions

Goal of the grant scheme is to strengthen integrated economic development of the regions of “Drina - Tara” and “Drina - Sava” by **supporting entrepreneurial initiatives** focusing on **strengthening touristic offer of the region and improving production chains of agricultural, food and craft products, improvement of tourism services** through integrated projects **fostering cooperation among operators in the value chain.**

Additional activities:

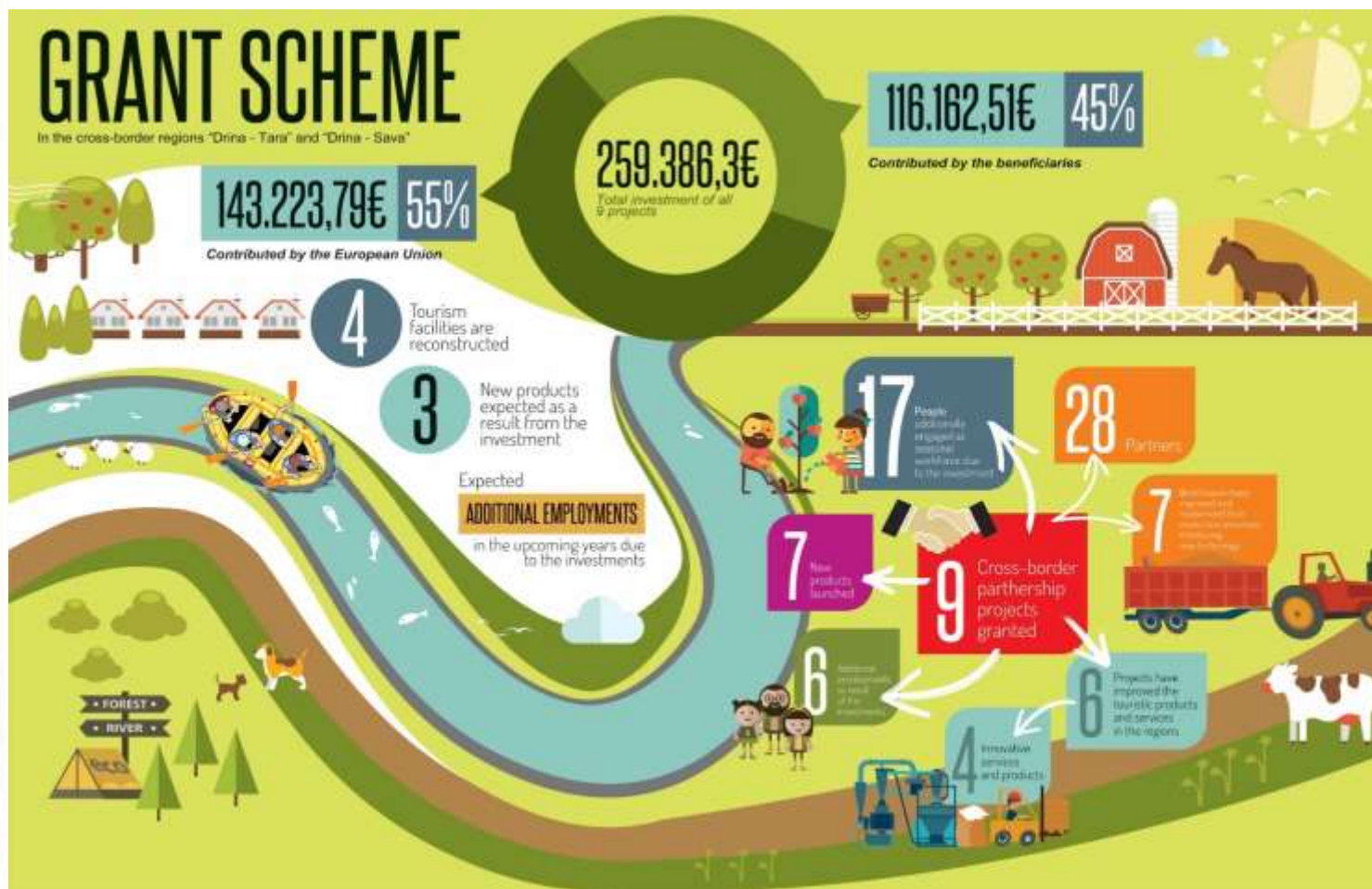
- Support to promotion of the integrated economic development actions
- Capacity building of grant beneficiaries (in cooperation with FAO)

Criteria

- At least two countries
- At least two sectors
- Partnership & cooperation in value chains (e.g. farmers, processors, public/private service providers etc.)
- Include attractive / unique/ special story, site, product, service offered

ABDA Grant scheme

SEERURD
SUGAR



ABDA Reality

- Continued funding of capacity building and maintenance of the structures
- Budgetary allocation for investments in local economic development **missing**
- Potentially, funding of ABDA priorities through IPA II Programmes
- Some funding from different donors



Funding Opportunities cross-border/ regional level

- Cross-Border Cooperation Programmes
- Transnational Cooperation Programmes under Structural Funds` European Territorial Cooperation objectives
- ERDF transnational cooperation Programmes: “Danube”, “Adriatic-Ionian”, “Mediterranean”, “Balkans-Mediterranean”
- Different bi-lateral donors (limited regional programmes)
- International Finance Institutions (e.g. EBRD, EIB, etc.)

Funding Opportunities

National level

- IPARD II
- National support schemes: Agriculture, Regional Development Environmental Protection, Social Cohesion
- Different Donors
- International Finance Institutions (e.g. EBRD, EIB, etc.)

SWGD
ERD

ABDA Future perspective Fund raising strategic approach

- **1st priority** – short-term: acquire funding to be channeled through SWG for grant schemes for investments in ABD priorities
- **2nd priority** – mid-term: supporting the SHG and stakeholders to access other available funding sources,
- **3rd priority** – long-term: Seek cooperation with International Finance Institutions (e.g. EBRD, EIB, etc.) and IPA II facilities to increase funding to implement ABD priorities.

ABDA Future actions

Conceptual activities

- Further develop concept of short value chains
 - focus on quality
 - Partnerships - Integration partners in the value chain
 - Public/private partnerships
 - Focus on local, traditional quality products/services
 - Introducing the concept of greening of the value chain
- Creation and management of clusters
 - Identification of clusters
 - Branding of clusters/area
 - Promotion of brand

SWGD
SRD



Conclusions

- Stakeholder groups confirm their interest in continuing and consolidating the ABDA
- Private businesses confirm their interest developing partnerships and quality oriented short value chains
- Local interest in balanced economic development and sustainable use and protection of natural resources
- Essential to attract increased funding to achieve these goals
- Political commitment of WB governments is needed





Long path towards achievement of the development goals of the regions is ahead!